

DMS-BC16

Customized MB



Features

- Support AMD 906-pin Kaveri-65W FM2r2 processor with AMD A88X FCH
- 2x DDR3 1333 SODIMM Slots, up to 16G Max
- Supports 1x HDMI, 2x VGA, 1x LVDS, 5x USB, 2x Giga LAN, 4x COM ports, 1x mSATA
- 1x Audio, Line-in, Mic-in, Line-out

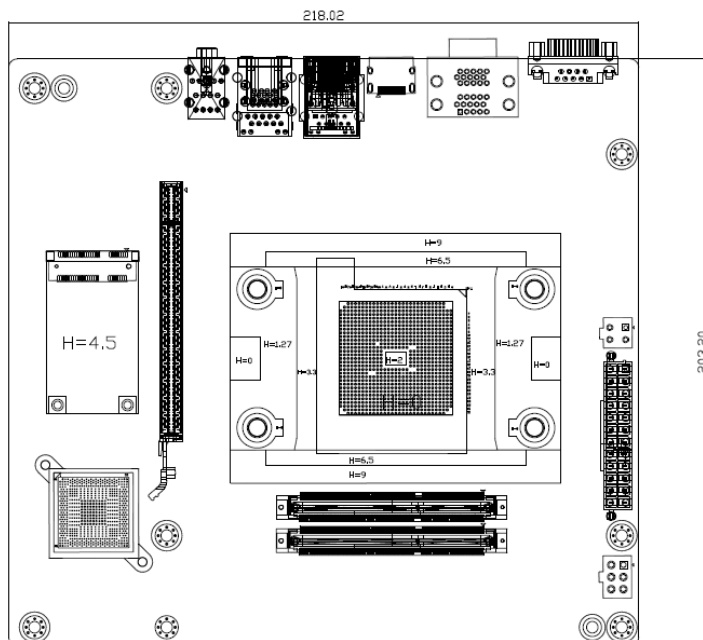
Specifications

Chipset	CPU	Support AMD 906-pin Kaveri-65W FM2r2 processor
	Core Number	Up to 4 Cores
	FCH	AMD A88X
	BIOS	SPI BIOS
Expansion Slot	Mini-PCIe/mSATA	1x mSATA connector, co-lay with Mini PCIe slot
	PCIe	1x PCIeX16 Slot
Memory	Technology	2x DDR3 1333MHz socket
	Max. Capacity	16GB
Display	LVDS	Yes
	VGA	Yes
	HDMI	Yes
Ethernet	Controller	Intel WGI211AT
	Interface	2x RJ45, 10/100/1000 Mbps
Audio	Controller	Realtek ALC892
	Interface	1x Mic-in, 1x Line-out, 1x Line-in
Rear I/O	VGA	1
	HDMI	1
	Serial port	1, RS232
	Ethernet	2
	USB	2 (USB 2.0)+2(USB 3.0)
	Audio	1x Mic-in, 1x Line-in, 1x Line-out
Internal I/O	Mini-PCIe/mSATA	1 (F/S), co-lay
	PCIeX16	1
	CPU FAN	1, 4-pin wafer
	System FAN	1, 3-pin wafer
	Case Open	1,3-pin wafer
	SATA port	1
	USB	4
	Serial port	3

Specifications Cont.

Internal I/O	GPIO	3
	LVDS	1, 40-pin connector
	TPM	1, 20-pin header
Power Requirements	Input power	ATX power
OS	Support Win XP, Win7, Fedora 14	
Environment	Operating	-5°C ~ +60°C, humidity:0~90%
	Non-Operating	-30°C ~ +70°C
Physical Characteristics	Dimensions	218mm X 203 mm X 41mm

Dimension



Design & Manufacturing Services

- This product is for ODM only

ODM products are designed for customers with consistent orders and specific design requirements. ODM products are subject to minimum annual order quantities and engineering charges. Evaluation units are available that are not limited to the above conditions. ODM customers are served by dedicated Advantech project teams.

- For sales inquiries and further information, please contact: ayla.tian@advantech.com.cn