



Pneumatic Spring Return Automated Ball Valve Package

Series 22
Direct Mount

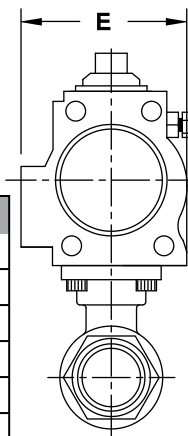
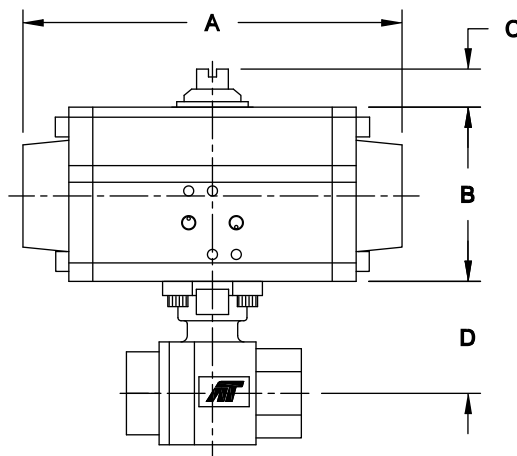
Available in 316SS
 Sizes 1/4" – 3"
 Full Port Valve
 Threaded Ends
 1000 psi WOG
 NACE MR-0175
 2-piece High Cycle Design
 Blowout Proof Stem w/ Dual
 Anti-Static Devices
 RTFE Seats Standard
 Pyramidal Stem Seal Design

STANDARDS

DESIGN	ANSI/ASME B16.34
END CONNECTIONS	ASME B1.20.1
SULFIDE STRESS PROTECTION	NACE MR0175
MOUNTING	ISO 5211
MARKING SYSTEM FOR VALVES	MSS SP-25, MSS SP-55
SAFETY INTEGRITY	IEC 61508:2010; SIL 3
MATERIAL CERTIFICATION	EN 10204-3.1 MTR
QUALITY ASSURANCE	ISO 9001:2008



Direct Mount



DIMENSIONS (IN)

VALVE SIZE	A	B	C	D	E	VALVE Cv
1/4"	7.60	2.76	0.79	1.53	2.58	7
3/8"	7.60	2.76	0.79	1.53	2.58	8
1/2"	7.60	2.76	0.79	1.60	2.58	15
3/4"	7.95	3.43	0.79	1.82	3.29	40
1"	7.95	3.43	0.79	2.24	3.29	70
1-1/4"	9.29	4.49	0.79	2.40	4.41	110
1-1/2"	9.29	4.49	0.79	3.06	4.41	250
2"	9.29	4.49	0.79	3.35	4.41	350
2-1/2"	11.46	5.28	0.79	4.31	5.20	600
3"	13.90	6.18	0.79	4.63	6.04	900

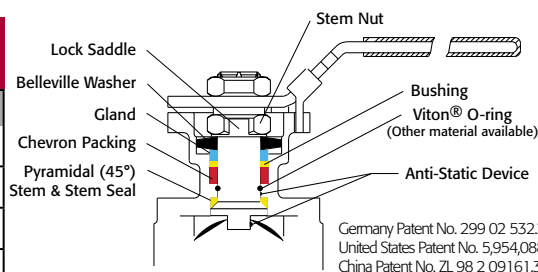
DIMENSIONS SHOWN ARE FOR ASSEMBLIES SIZED FOR 80 PSI SUPPLY



SERIES 22 2-piece Direct Mount

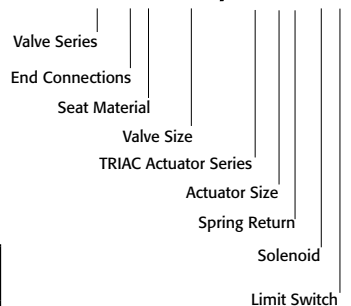
SIZED FOR 80 psi AIR SUPPLY	
SIZE	MODEL
1/4"	22-TX-025/TR1S-XX
3/8"	22-TX-038/TR1S-XX
1/2"	22-TX-050/TR1S-XX
3/4"	22-TX-075/2R2S-XX
1"	22-TX-100/2R2S-XX
1-1/4"	22-TX-125/2R3S-XX
1-1/2"	22-TX-150/2R3S-XX
2"	22-TX-200/2R3S-XX
2-1/2"	22-TX-250/2R5S-XX
3"	22-TX-300/2R6S-XX

SIZED FOR 60 psi AIR SUPPLY	
SIZE	MODEL
1/4"	22-TX-025/TR1S-XX
3/8"	22-TX-038/TR1S-XX
1/2"	22-TX-050/TR1S-XX
3/4"	22-TX-075/2R2S-XX
1"	22-TX-100/2R3S-XX
1-1/4"	22-TX-125/2R3S-XX
1-1/2"	22-TX-150/2R4S-XX
2"	22-TX-200/2R4S-XX
2-1/2"	22-TX-250/2R5S-XX
3"	22-TX-300/2R6S-XX



Germany Patent No. 299 02 532.2
 United States Patent No. 5,954,088
 China Patent No. ZL 98 2 0916.3

SAMPLE PART # 22-TX-100/2R3S-XX



See valve part number matrix for complete part number and options.

OPTIONS

DESCRIPTION	PART NO. SUFFIX	DESCRIPTION	PART NO. SUFFIX
NEMA 4 Solenoid	(A)	NEMA 4 Limit Switch (2) spdt	(A)
NEMA 7 Solenoid	(B)	NEMA 7 Limit Switch (2) spdt	(B)
Intrinsically Safe Solenoid	(C)	Intrinsically Safe Limit Switch	(C)

Other options available - call for details
 Actuators are sized based on clean/clear fluid.
 22SR-20150921
 Copyright 2013 A-T Controls, Inc.



9955 International Blvd.
 Cincinnati, Ohio 45246
 www.atcontrols.com

PHONE (513) 247-5465
 FAX (513) 247-5462
 sales@atcontrols.com